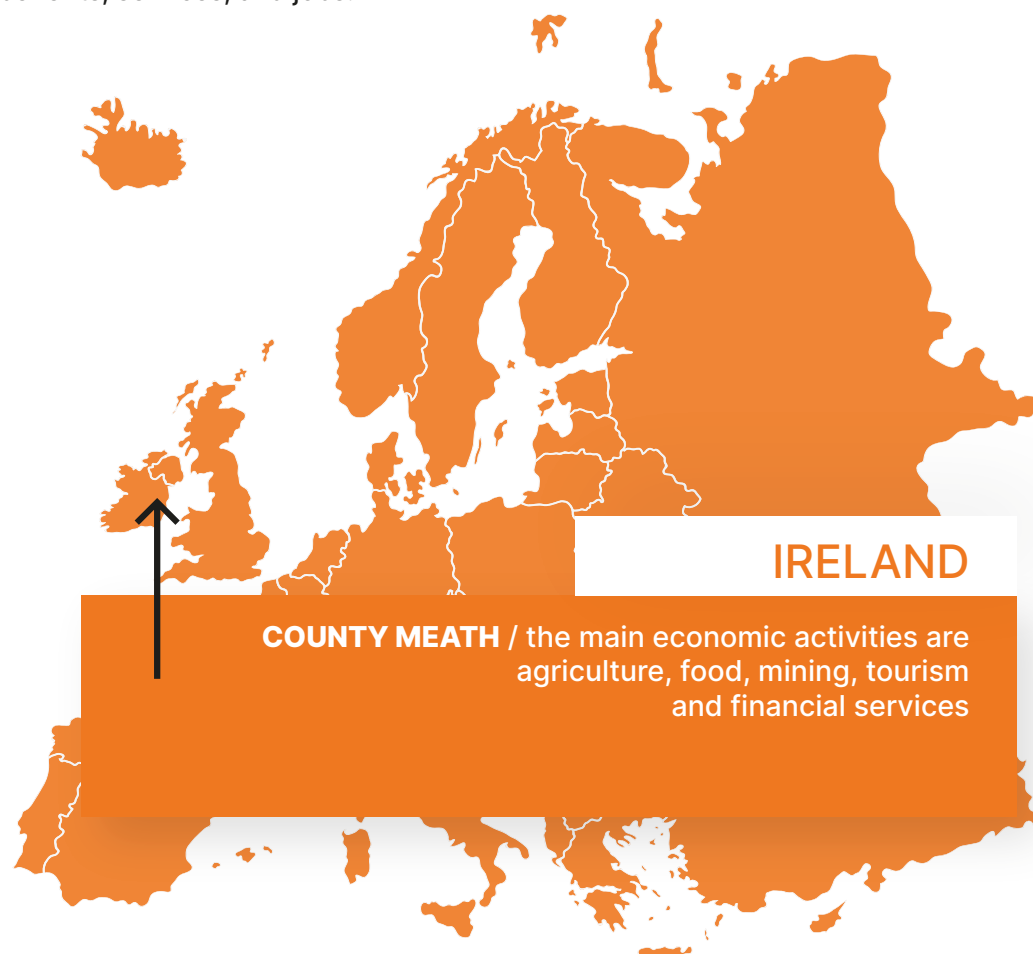


# StayOn\_

A more inclusive, active and creative world!

## What is our goal?

StayOn's objective is to create conditions that enable young people to "stay on" rural areas by ensuring access to opportunities, benefits, services, and jobs.



## Youth Unemployment rates in 2021

- in Ireland 6.8%
- in the Eastern and Midland region 7%

## Driving forces

- Automation • Globalization • Type of contracts
- State of the economy • Informal work

- Socioeconomic factors
- Demographic factors
- Type of education
- Poor Skills • Skills mismatch

→ **Crucial potentials**

## What we need to do:

- guide adult school leavers with low educational attainment through local access possibilities to learning in formal education and vocational training
- support young adults in discovering social, technical, natural, and economic resources around them as well as in acquiring knowledge of new technologies such as information technology and software development
- tackle demographic and socioeconomic factors affecting youth employment by developing a multi-disciplinary long-term approach in collaboration with other stakeholders to overcome local constraints and create sustainable job opportunities